



Marine Corps Base Camp Lejeune

Avian Protected Species Monitoring



**Kelli Applegate, Wildlife Biologist
Threatened & Endangered Species Section
Environmental Conservation Branch
Environmental Management Division**



Species Monitored

- ❖ Waterbirds/Shorebirds
- ❖ Bald Eagle
- ❖ Red-cockaded Woodpecker



Annual

- ❖ Nest Monitoring/Protection of Colonial Waterbirds & solitary shorebirds
- ❖ International Shorebird Survey
- ❖ NC PIPL Census
- ❖ REKN migration survey
- ❖ Winter shorebird survey
- ❖ AMOY chick banding

Biennial

- ❖ NC Colonial Waterbird Survey

Triennial

- ❖ NC AMOY/WIPL Census



Top to bottom: Wilson's plover, American oystercatcher chick in nest, piping plover, least tern nest



**Marine Corps
Base
Camp Lejeune**

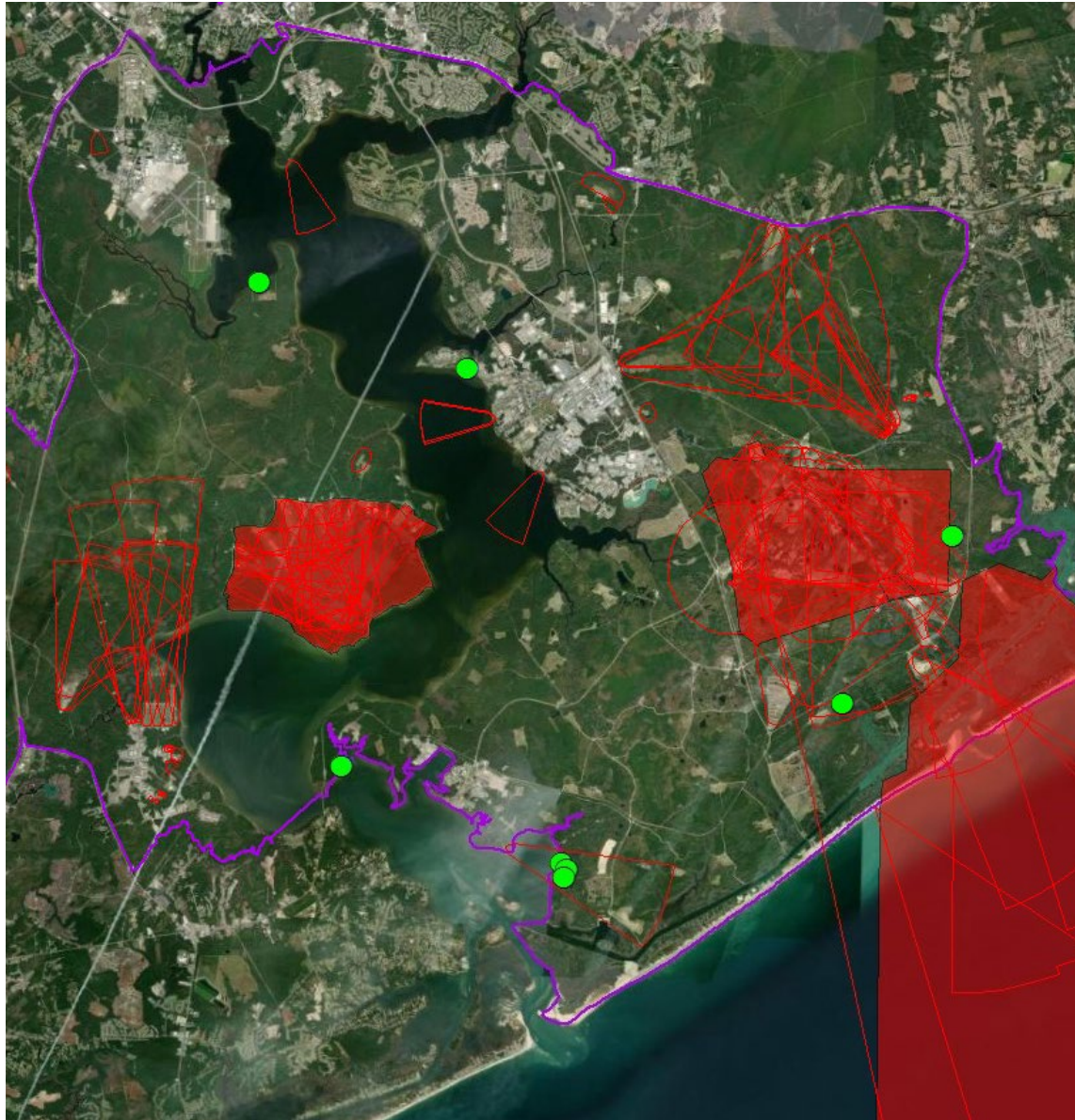
Bald Eagle Nest Monitoring



- Monitoring under ESA began in 2002 with 1 nest
- Now 6 active & 2 alternate known nests
- Currently monitored under MBTA
 - Incidental take permit for military training operations
- 81 eaglets fledged to date!



Bald Eagle Nest Monitoring





**Marine Corps
Base
Camp Lejeune**

Red-cockaded Woodpecker Biology Overview



- ❖ Cooperative breeder
- ❖ Family group lives in a group of cavity trees called a “cluster”
- ❖ Males inherit territories, females typically disperse
- ❖ Excavates nest cavities in living pine trees (prefers longleaf)
- ❖ Suitable foraging habitat is pine habitat >30 years old with minimal hardwood midstory
- ❖ MCB Camp Lejeune is part of the Coastal North Carolina Primary Core Population of the USFWS Mid-Atlantic Coastal Plain Recovery Unit





Red-cockaded Woodpecker Program Overview



Management Plans & Guidance

- ❖ USFWS RCW Recovery Plan
- ❖ MCBCL Integrated Natural Resources Management Plan
- ❖ MCBCL RCW Management Plan

Goals

- 100% monitoring of RCW population and military impacts
- Conserve RCW while enhancing the Marine Corps' ability to utilize MCB Camp Lejeune's training areas
- Reach local recovery goal of 173 active clusters

Management Activities

- Cluster/cavity tree management & protection
- Forage habitat/partition management
- Population monitoring and management



**Marine Corps
Base
Camp Lejeune**

Cluster & Cavity Tree Management



- Mark cavity trees
- Mark/sign buffers on “restricted” clusters
- Maintain a minimum of 4 suitable cavities per cluster
 - Utilize “start” holes, drilled cavities, insert boxes when needed
- Installation of cavity restrictors (if necessary)
- Area clearing around [cavity] trees (ACAT) for protection against prescribed burning and wildfire





**Marine Corps
Base
Camp Lejeune**

Habitat Management



- Partition-level management
 - 120-200 acres of quality foraging habitat/partition is the goal
 - Increase nesting habitat through “recruitment” stands
- Forest management
 - 10-year prescription cycle
 - Restoration of/conversion to longleaf pine
 - Thinning
 - Regeneration
 - Midstory and canopy hardwood control
 - Manual, mechanical, herbicide
- Prescribed burning





**Marine Corps
Base
Camp Lejeune**

Red-cockaded Woodpecker Monitoring



- Cooperative partnership w/ VA Tech since 1985
- Dr. Jeff Walters instrumental in program's success
- Virtually 100% of population monitored
 - Nest monitoring
 - Banding chicks & adults
 - Home range "follows"
- Allows for analysis of:
 - Population demographics
 - Reproductive success
 - Habitat use/preference





**Marine Corps
Base
Camp Lejeune**

RCW Nest Monitoring





**Marine Corps
Base
Camp Lejeune**

RCW Chick Banding





**Marine Corps
Base
Camp Lejeune**

RCW Adult Banding





**Marine Corps
Base
Camp Lejeune**

RCW Home Range "Follows"



Image: A. Sager



**Marine Corps
Base
Camp Lejeune**

RCW Recovery and Sustainment Program (RASP)



- ❖ Developed by MCB Camp Lejeune and USFWS as a strategy to establish new or grow existing subpopulations within the CNC Primary Core Population
- ❖ Allows the installation to enter into agreements with agencies, NGOs, and private landowners to establish new RCW groups off-base
- ❖ On-base RCW recovery goal can therefore be reduced, alleviating constraints on mission-critical range and training area capabilities
- ❖ RASP allows MCB Camp Lejeune to expand scope of Section 7 consultations to include the entire CNCPC population



**Marine Corps
Base
Camp Lejeune**

A Success Story in Process



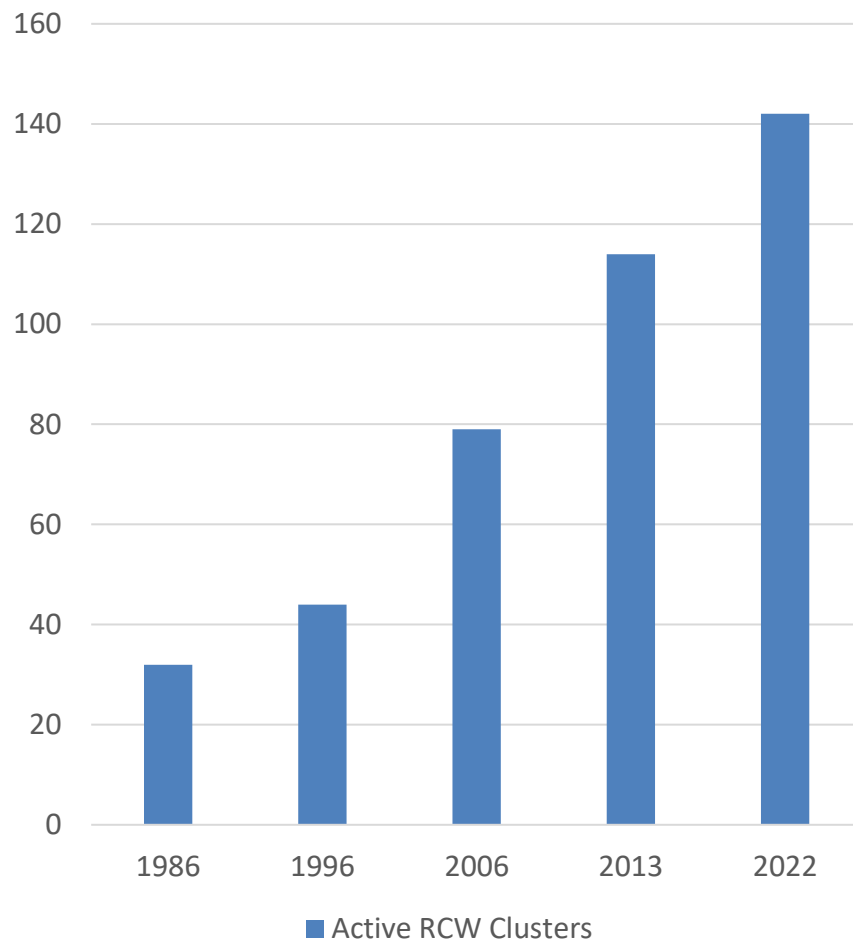
Since 1985:

- ❖ Nearly 5,000 birds banded
- ❖ Number of active RCW clusters has increased >340%

MCBCL successfully:

- ❖ Reached 1st of 4 population milestones, with 2nd in reach. This means less restrictions on training!
- ❖ Navigated several challenging Section 7 ESA consultations

Active RCW Clusters





**Marine Corps
Base
Camp Lejeune**



Thanks for your attention!
Any questions?



UNCLASSIFIED//FOR OFFICIAL USE ONLY

Image: A. Getz